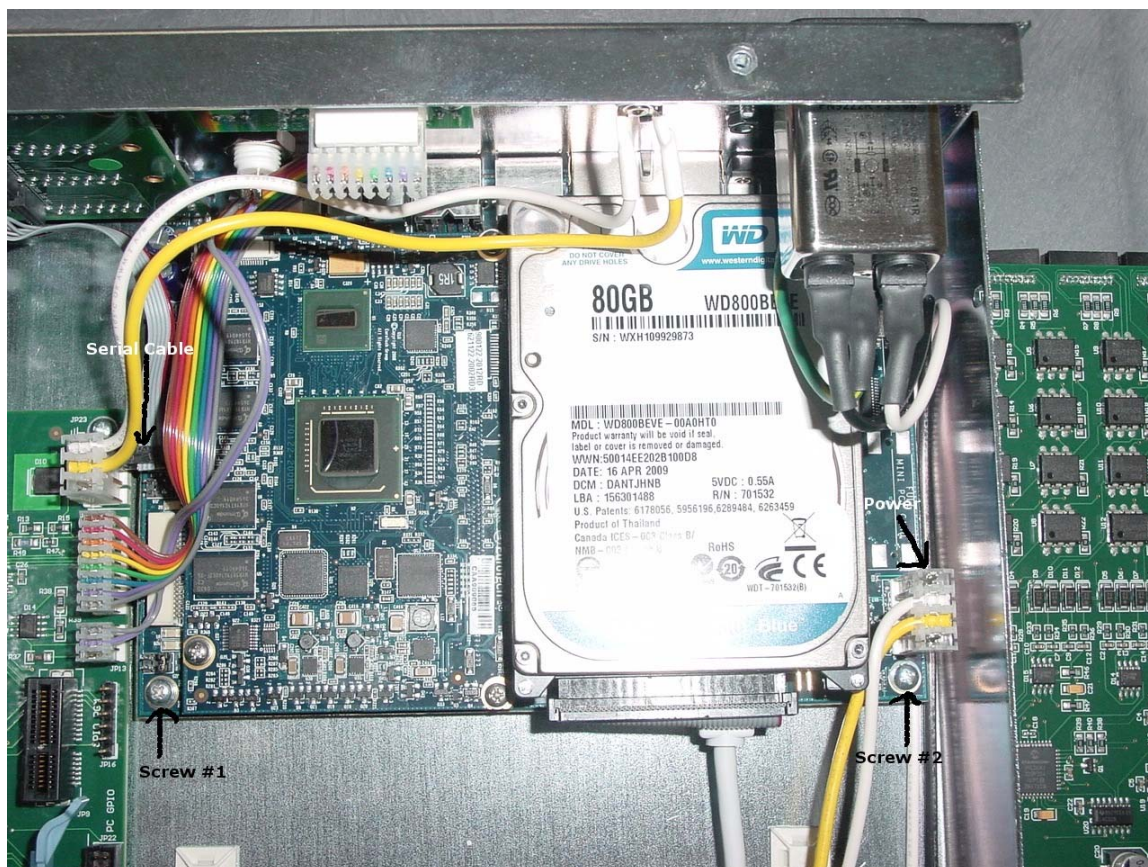




Logitek Electronic Systems, Inc.  
Application Note  
January 21, 2010  
Author: John Davis, CBNT

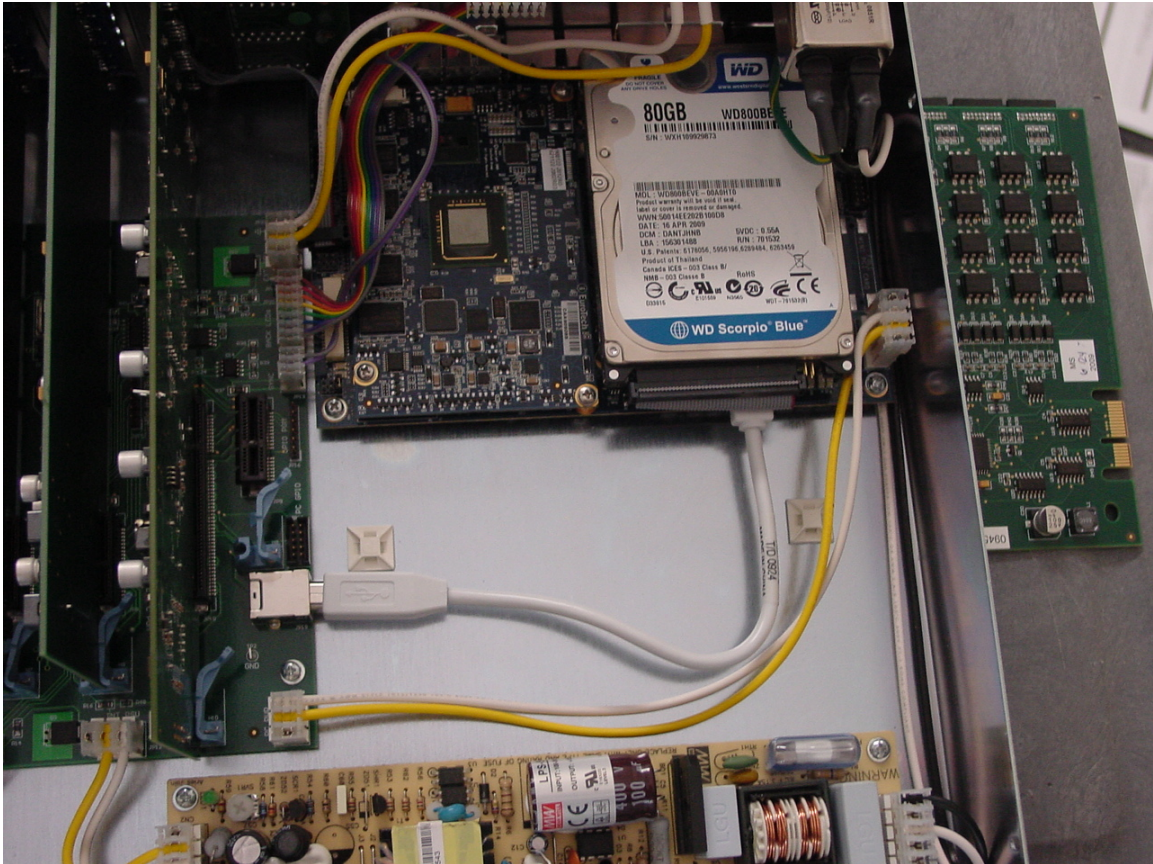
## Replacing an Embedded PC in a JetStream Mini

The JetStream Mini uses an Embedded PC for networking. Here is how to remove it for maintenance.

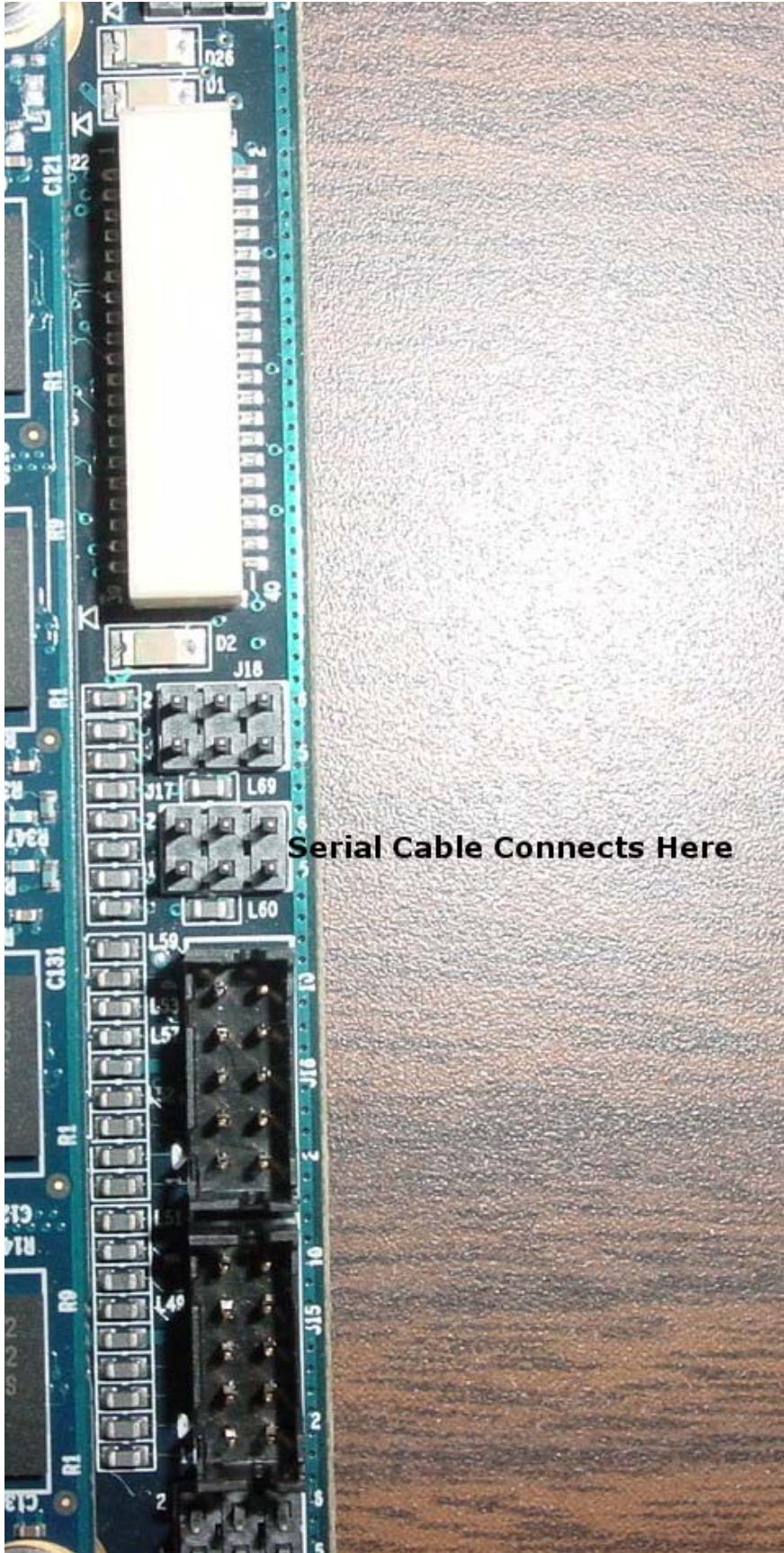


These directions will assume that you have the JetStream Mini with the front of the unit facing you. As always, use gentle force and proper static discharge procedures. If the JetStream power is on, shut down Windows Embedded by going to the Start Menu and choosing "Shut Down" before proceeding.

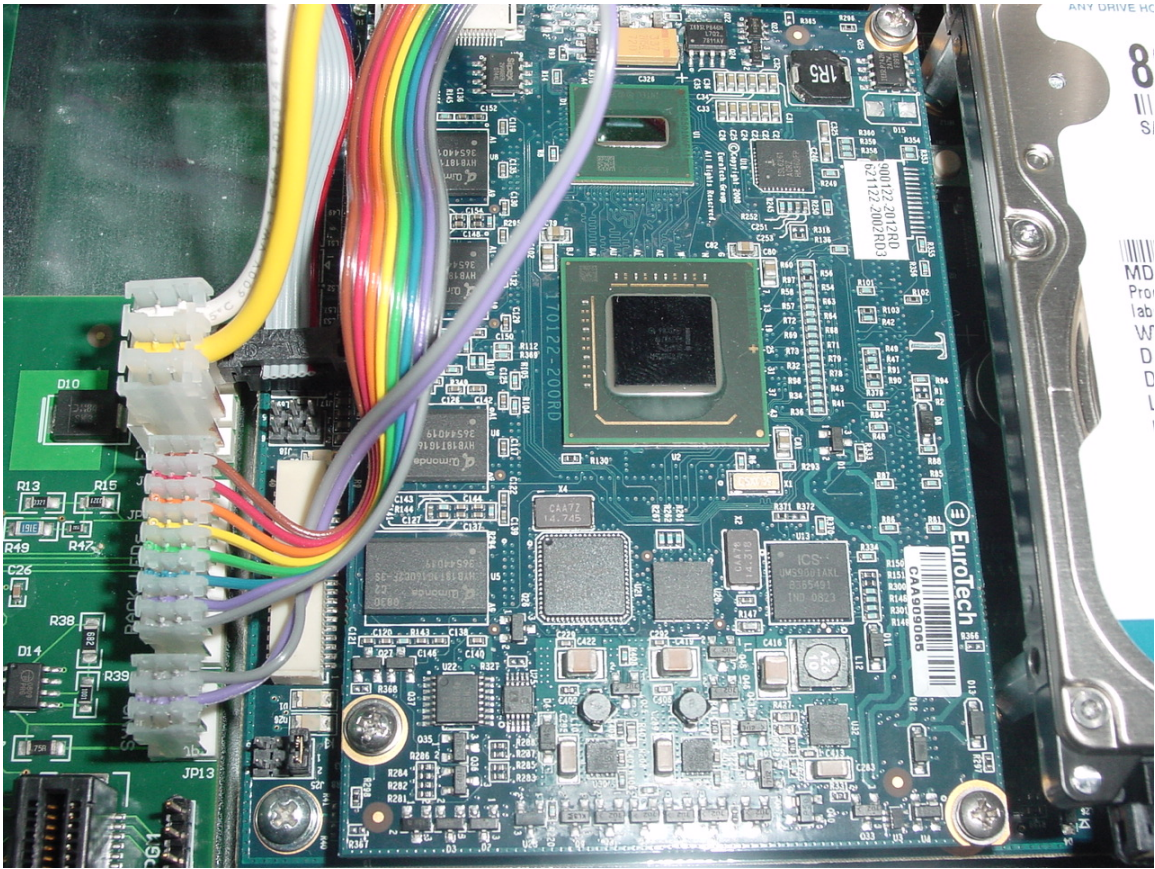
1. Remove the grey ribbon serial cable on the left edge of the PC.
2. Remove the yellow and white power cable on the right edge of the PC.
3. Remove the two screws on the front corners. (Leave all other screws intact!) You will now be able to slide the PC towards you.



4. Unplug the USB cable from the audio side of the unit. It's okay to leave the USB cable under the disk drive plugged in. You may now remove the PC from the JetStream.
5. After replacing the PC, fasten the screws first. Then plug in the USB to the audio side of the JetStream and apply power. After Windows has started (user is Administrator with no password), plug in the serial cable. If the JetStream Server application started automatically, close it and restart it from the Start menu. The correct pins to plug the ribbon cable to are shown in figure 3. It is a tight fit, but there is enough room for the ribbon cable to connect.



**Serial Cable Connects Here**



The serial cable, installed.